

F A L L 2001

Enrollment by Student Type (p. 1)
Enrollment by Age (p. 2)
Enrollment by GPA (p. 3)
Enrollment Status (p. 4)
Enrollment by Units Taken (p. 5)
Enrollment Status by Units Taken (p. 6)
Enrollment by Number of Classes Taken (p. 7)
Enrollment Status by Number of Classes Taken (p. 8)
Enrollment by Class Type (p. 9)
Gender by Race/Ethnicity (p. 10)



Victor Valley College
Research Department
(760) 245-4271 ext. 2648

FALL 2001: Student Characteristics

The following data depicts Victor Valley College students for the Fall semester of 2001. All data are based upon an overall, unduplicated headcount as of the first day of first census. Because all percentages are rounded to the first decimal place, one must remember that a percentage of 0.0 may not always indicate that there were no students represented in a category.

Chart 1: Fall 2001
Enrollment by Student Type

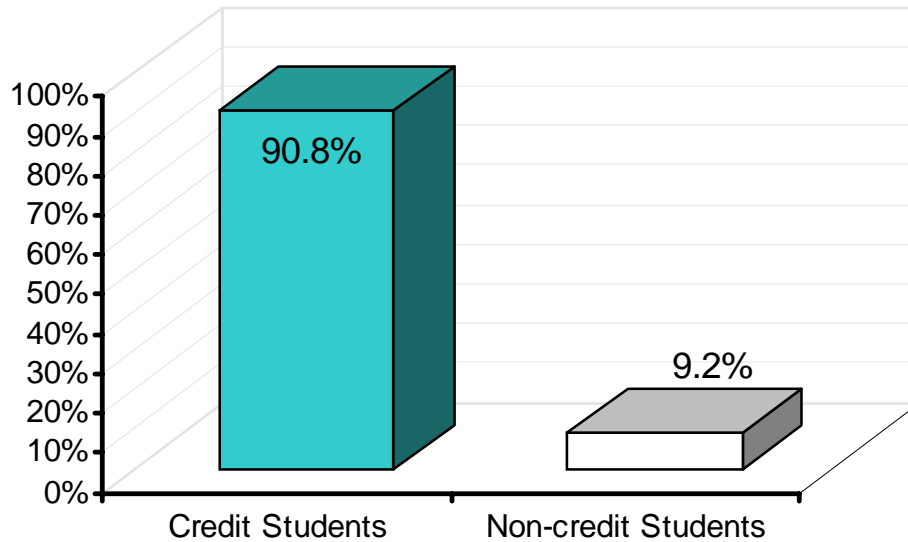


Chart 2: Fall 2001
Enrollment by Gender

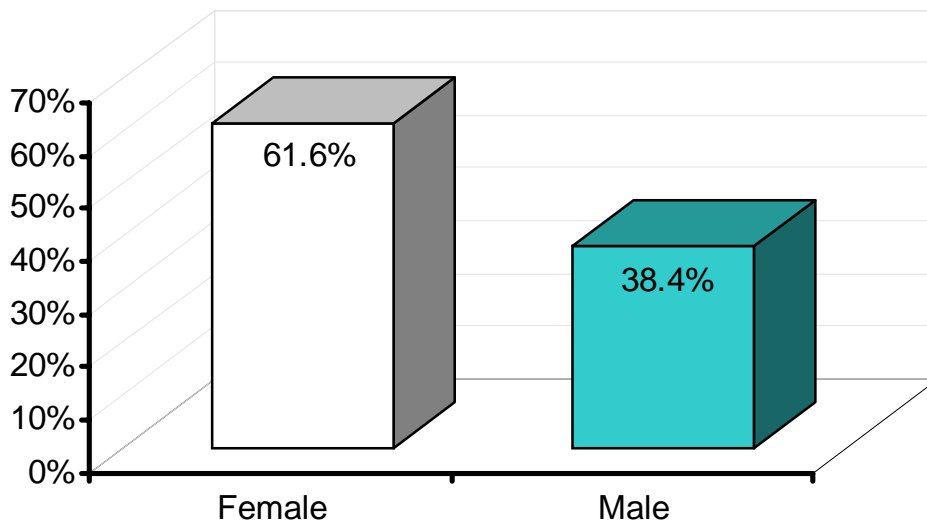


Chart 3: Fall 2001
Enrollment by Age

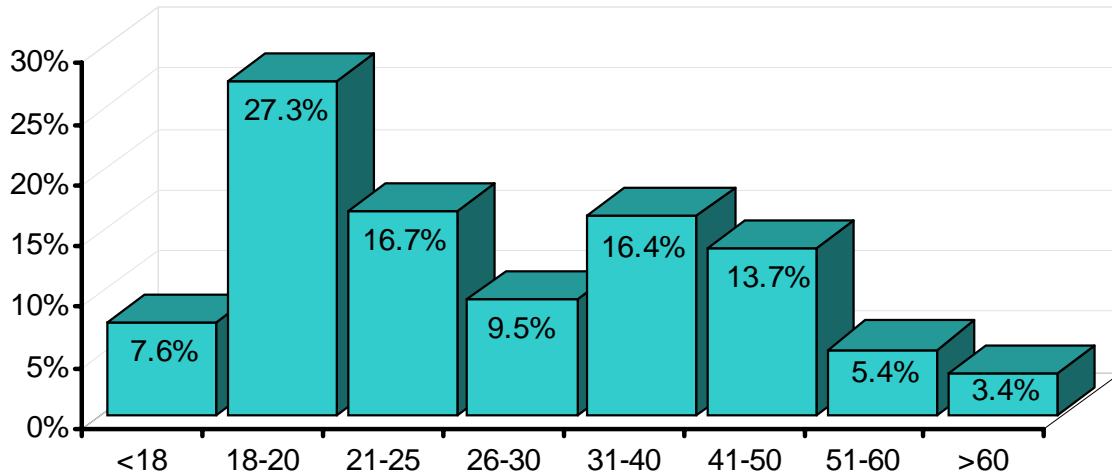


Chart 4: Fall 2001
Gender by Age

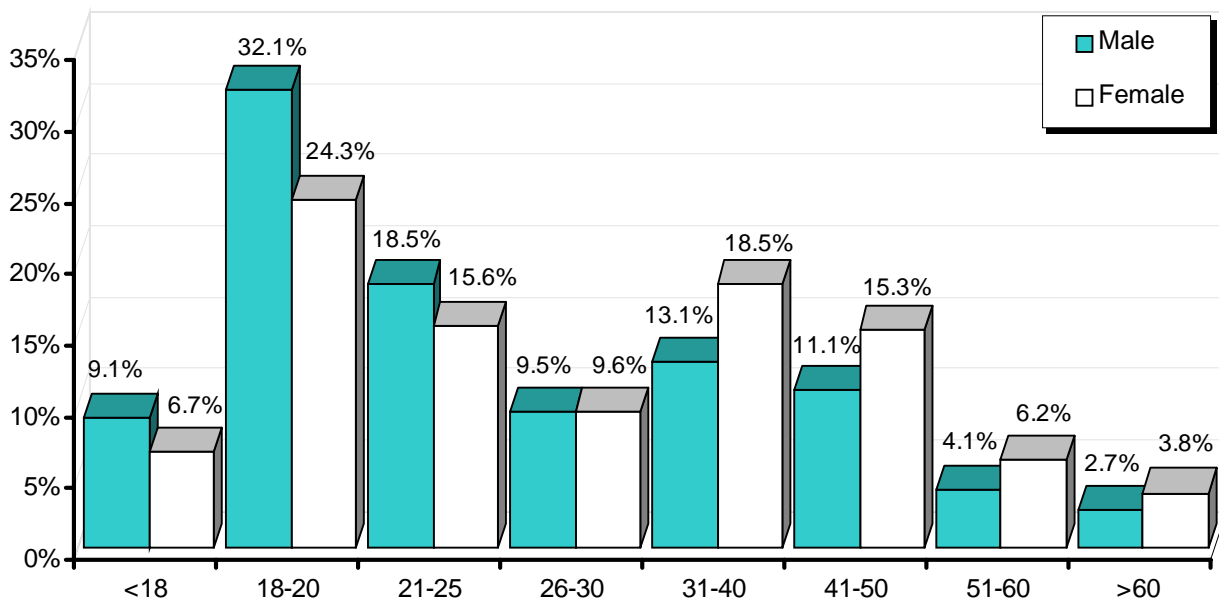


Chart 5: Fall 2001
Enrollment by GPA

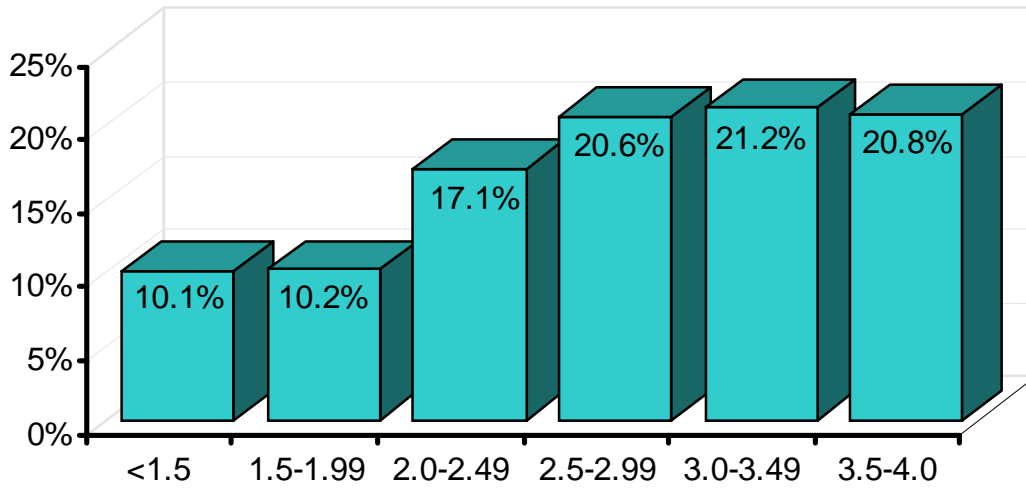


Chart 6: Fall 2001
Gender by GPA

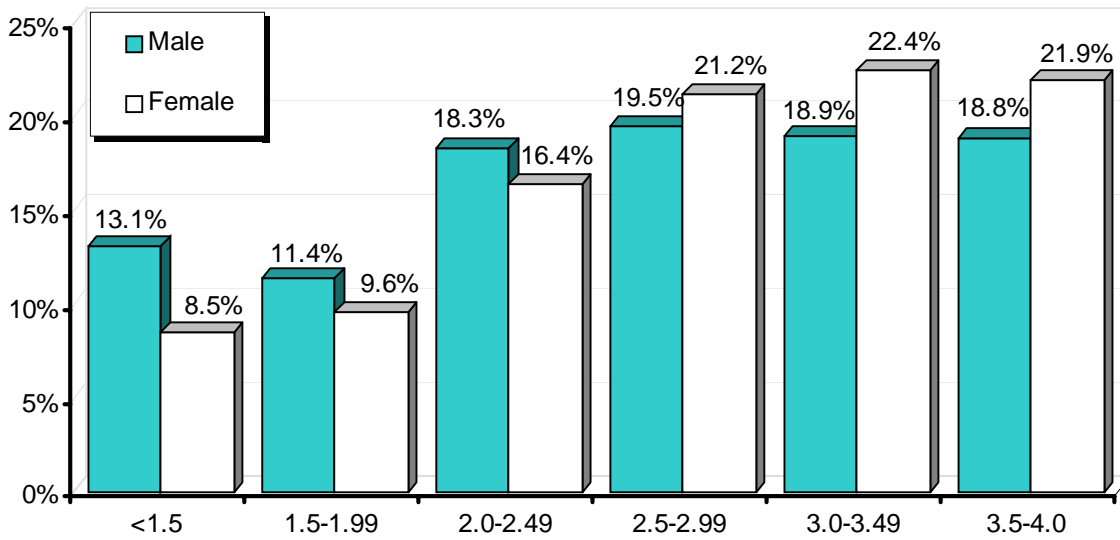
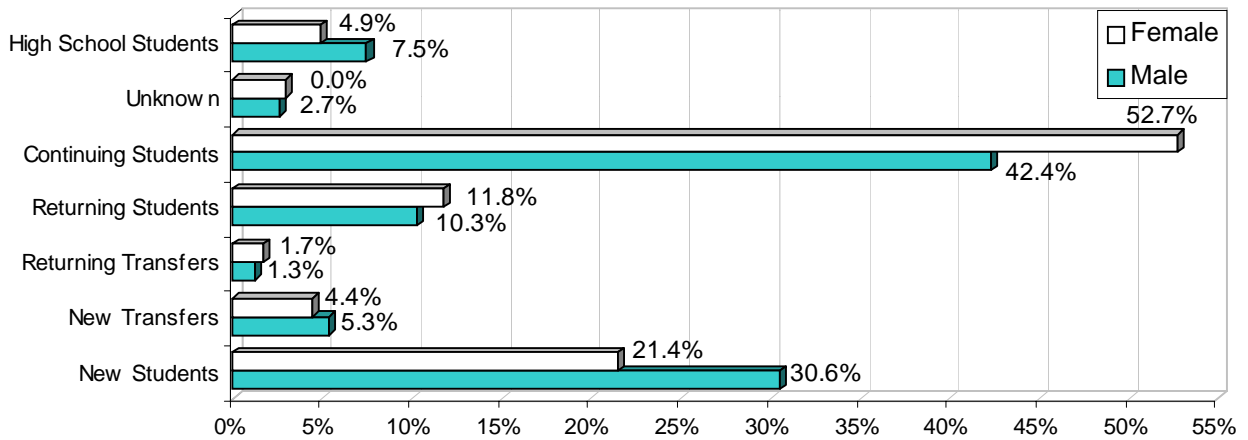


Chart 7: Fall 2001
Gender by Enrollment Status



ENROLLMENT STATUS	Female	Male	Total
New student = A student enrolled in any college for the first time after high school and exclusive of summer term enrollment.	1,640	1,499	3,139
New transfer student = A student enrolled at VVC for the first time and who transferred from another institution of higher education.	339	262	601
Returning transfer student = A student who has previously attended VVC, transferred to another college and has now returned to VVC.	131	64	195
Returning student = A student enrolled at VVC after an absence of one or more regular sessions without interim attendance at another college.	901	504	1,405
Continuing student = A student who is enrolled in the current session and who was enrolled in the previous regular session.	4,032	2,077	6,109
High School Student = A student who is enrolled in college yet continues to attend high school.	374	367	741
Total	7,417	4,773	12,190

Chart 8: Fall 2001
Enrollment by Units Taken

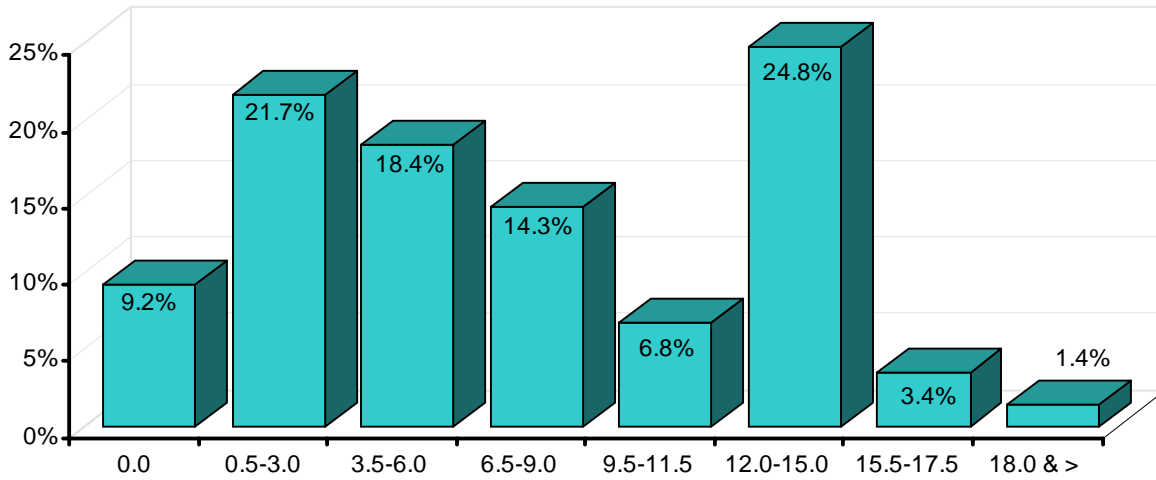


Chart 9: Fall 2001
Gender by Units Taken

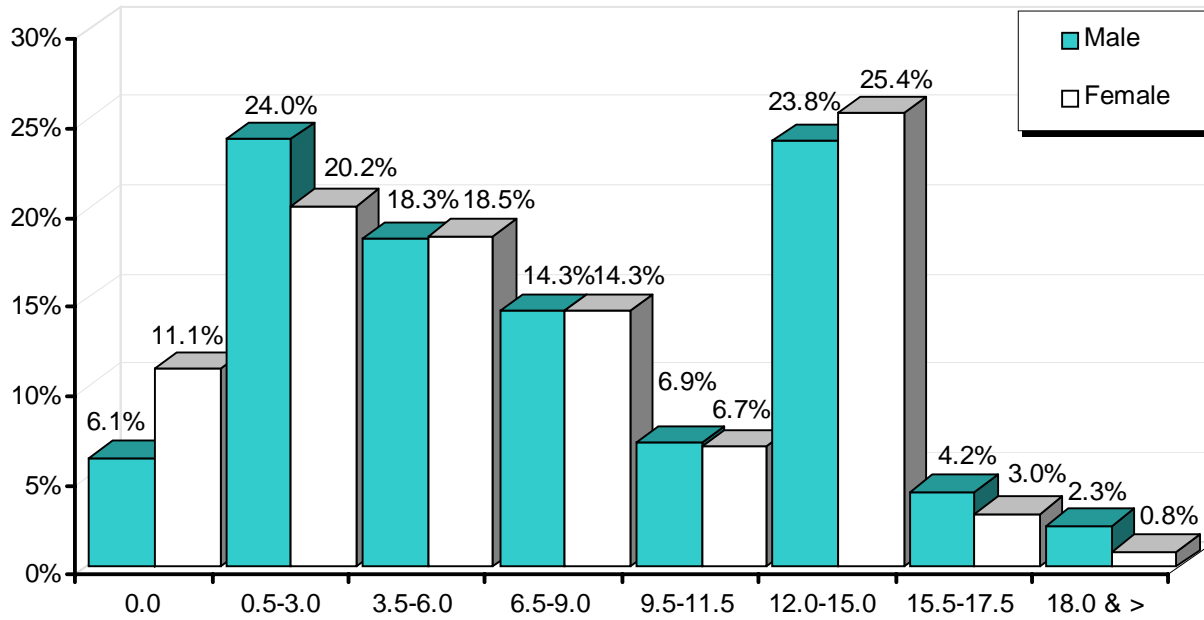


Chart 10: Fall 2001
Enrollment Status by Units Taken

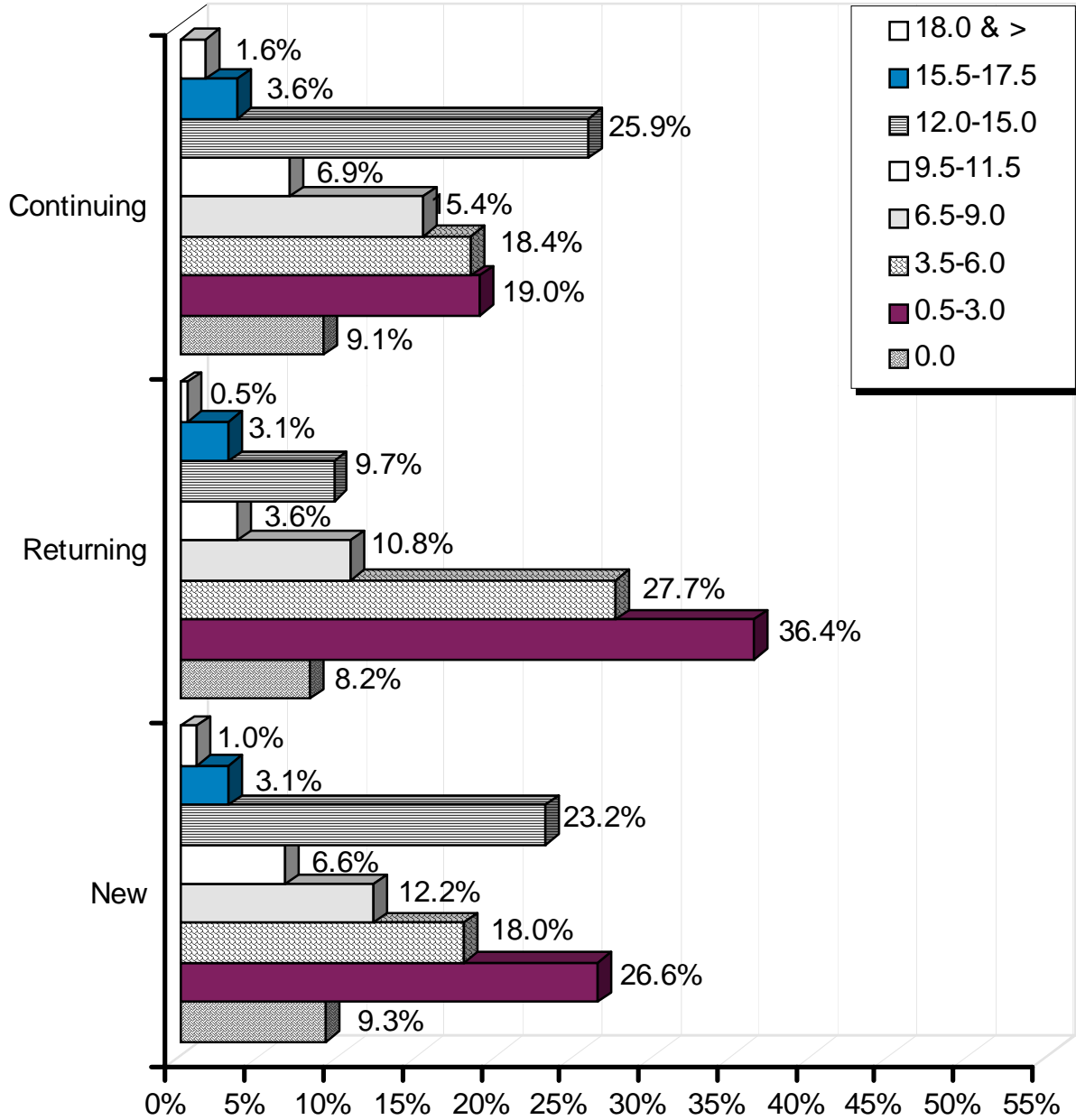


Chart 11: Fall 2001
Enrollment by Number of Classes Taken

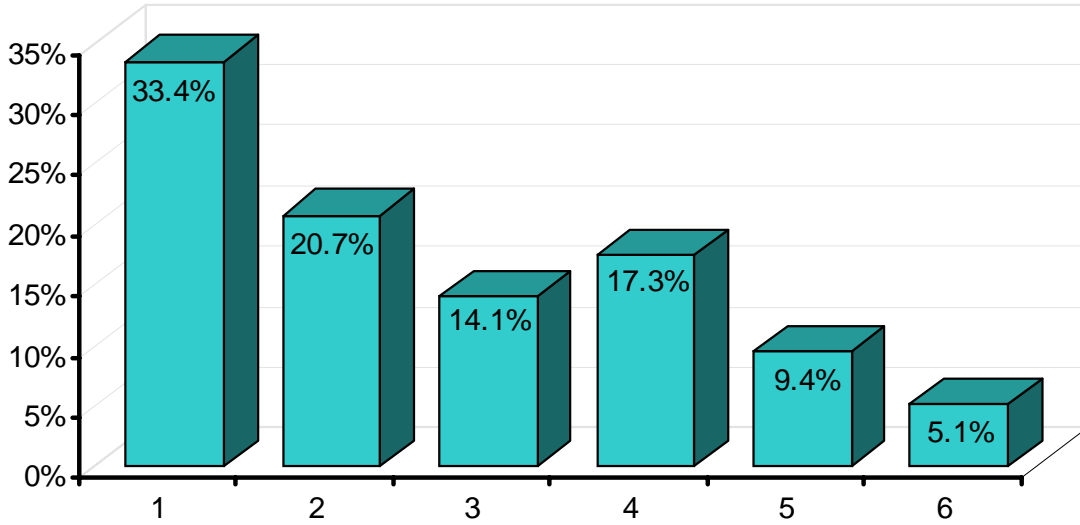


Chart 12: Fall 2001
Gender by Number of Classes Taken

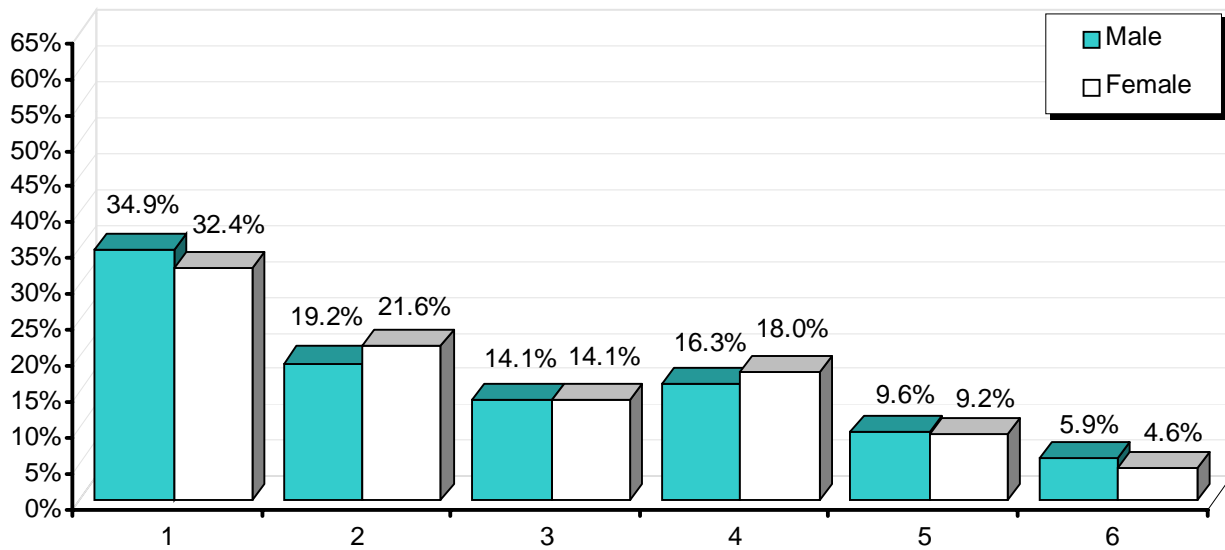


Chart 13: Fall 2001
Enrollment Status by Number of Classes Taken

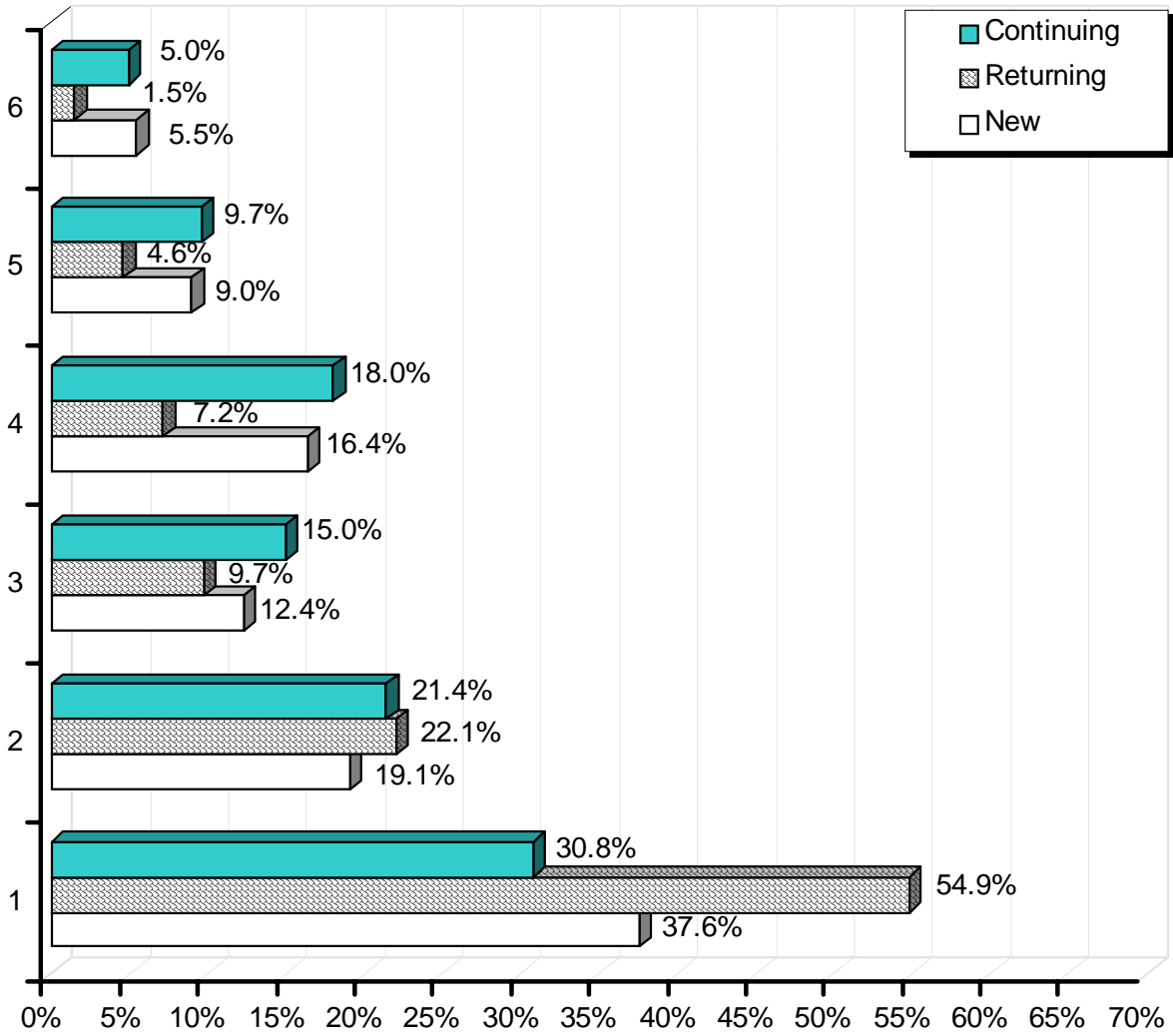


Chart 14: Fall 2001
Enrollment by Class Type

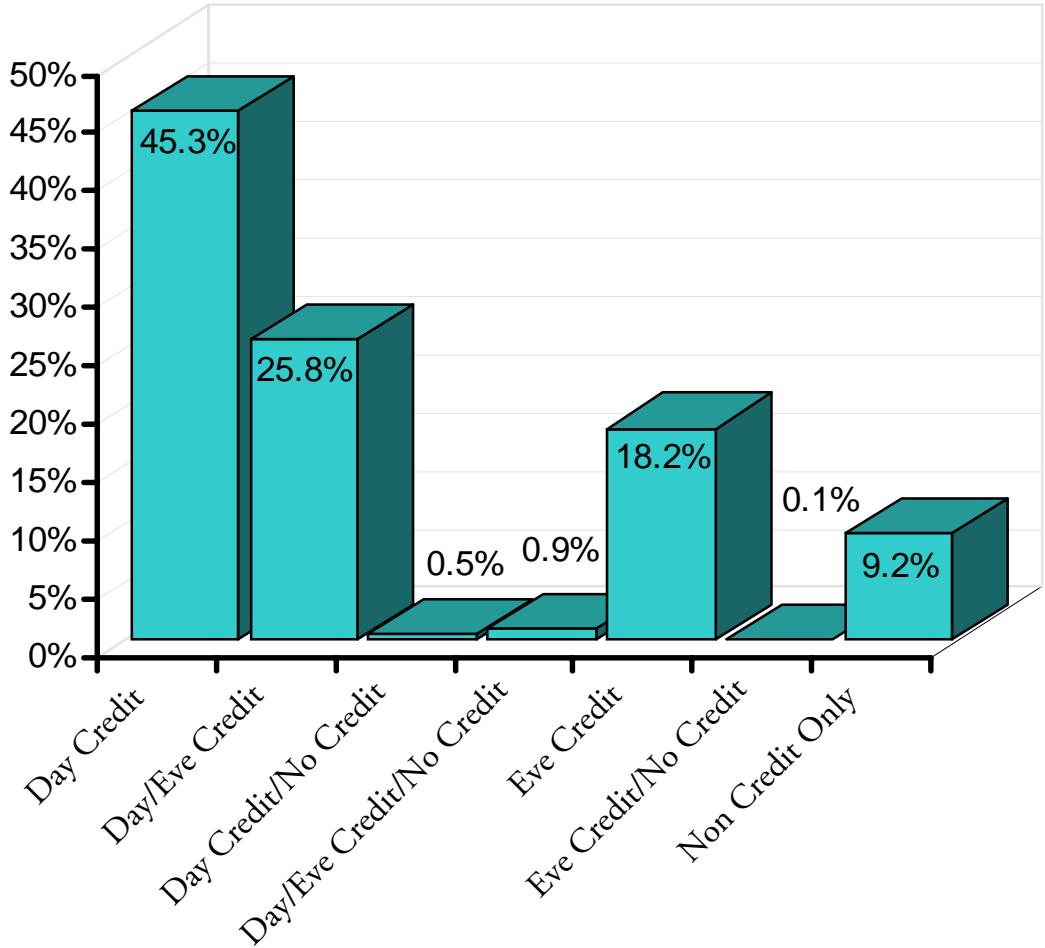


Chart 15: Fall 2001
Gender by Ethnicity

