



VICTOR VALLEY COMMUNITY COLLEGE DISTRICT  
MEASURE JJ BOND PROGRAM  
FACILITIES REPORT

**I. Program Update**

The following summarizes major activities completed or in progress as of September 30<sup>th</sup>, 2013.

**II. Program Budget Summary (Attachment A)**

The attached Bond Program Budget Summary has been revised to reflect the current priorities and plans and include bond revenues, expenditures and balances through September 30<sup>th</sup>, 2013. The project list has been updated to incorporate the Board approved projects that will be funded by the remaining revenues.

**The total program budget is \$139,045,427**

**III. Project Summary**

**Regional Public Safety Training Center- Project Complete.**



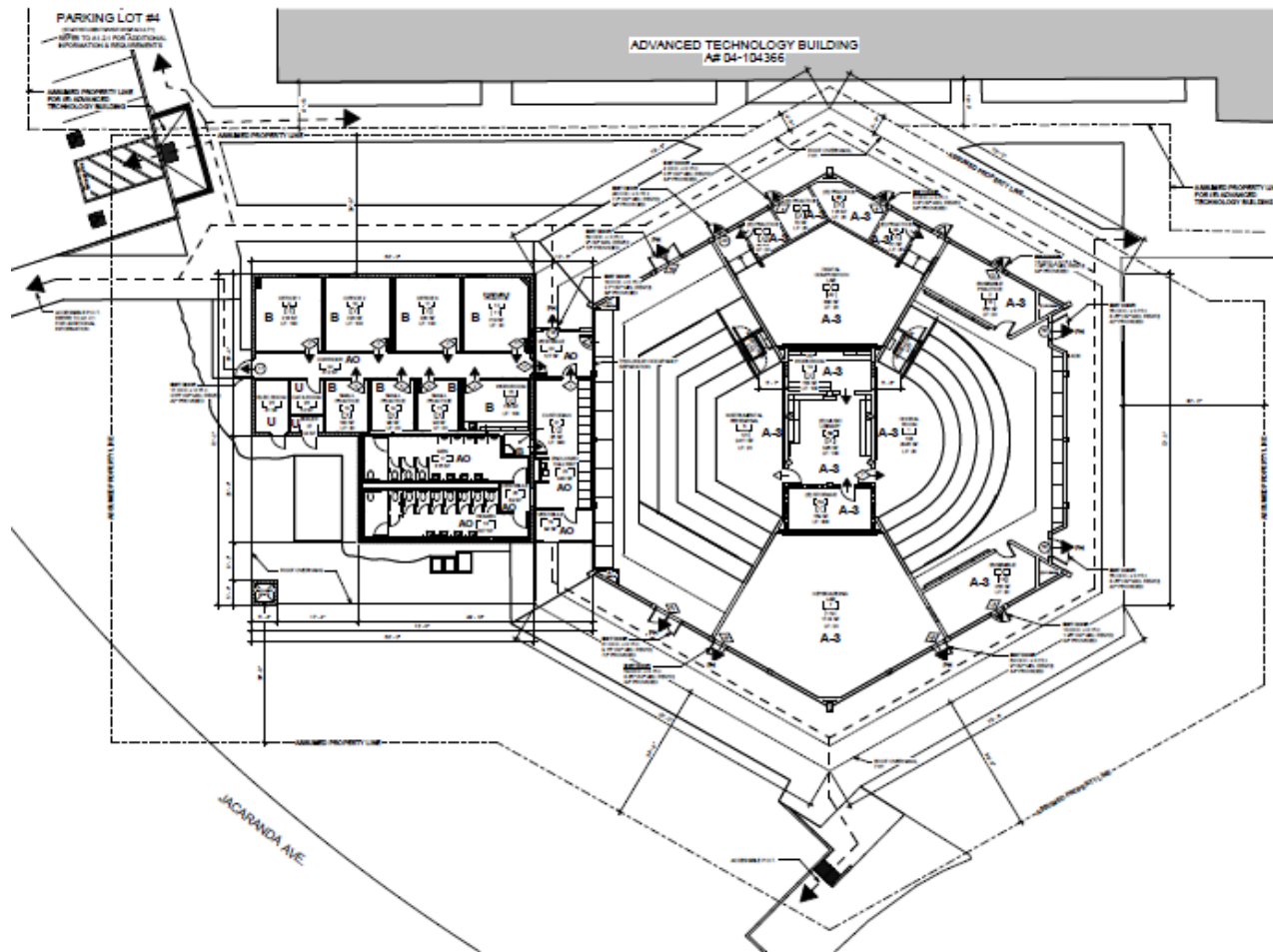
VICTOR VALLEY COMMUNITY COLLEGE DISTRICT  
MEASURE JJ BOND PROGRAM  
FACILITIES REPORT

## Music Modernization

- Consultant was hired to work with Facilities department, faculty & staff
- Programming and needs analysis of space and instructional uses has been identified through meeting with the faculty and staff using the 2010 room use analysis report
- Asbestos abatement has been completed
- N.T.D. Architecture was selected through a competitive process for design and construction oversight
- Plans were approved May 2013 by the Division of the State Architects office
- Webb Brothers Construction was awarded the construction contract on July 9, 2013 through a complete bid process
- Construction began in August 2013 and is scheduled for completion June of 2014



# VICTOR VALLEY COMMUNITY COLLEGE DISTRICT MEASURE JJ BOND PROGRAM FACILITIES REPORT





VICTOR VALLEY COMMUNITY COLLEGE DISTRICT  
MEASURE JJ BOND PROGRAM  
FACILITIES REPORT





VICTOR VALLEY COMMUNITY COLLEGE DISTRICT  
MEASURE JJ BOND PROGRAM  
FACILITIES REPORT







# VICTOR VALLEY COMMUNITY COLLEGE DISTRICT MEASURE JJ BOND PROGRAM FACILITIES REPORT



Victor Valley College has selected Balfour Beatty Construction and NTD Architecture to construct a 25,000 square foot new Science and Health building. It will be a one-story structure located adjacent to and on the west side of the existing Science Building 31. The new building will have additional Life and Physical Science Labs, highly specialized Training Labs for the Nursing program, all integrated with indoor and outdoor student gathering and study spaces to promote a collaborative and technology driven learning environment. Together Balfour Beatty/NTD have completed over 30 educational projects totaling over \$600 million throughout Southern California. The team will contract with local consulting firms and contractors to provide training and jobs for the local community.



VICTOR VALLEY COMMUNITY COLLEGE DISTRICT  
MEASURE JJ BOND PROGRAM  
FACILITIES REPORT

## Science Health Building

- Programming and needs analysis of space and instructional uses have been identified through meetings with the faculty and staff using the 2010 room use analysis report
- Faculty and staff have taken site visits to newly constructed Science/Health facilities at other colleges to gain greater perspective of both good and bad applications of equipment and lab layouts
- Scoping and construction documents were completed and Balfour Beatty & N.T.D. Architecture were awarded the contract as the design build team on April 9, 2013
- The design work is now complete and under review by the Division of the State Architects office.
- We are expecting approval in March of 2014 and to begin construction in May of 2014
- Projected completion date is anticipated in June 2015

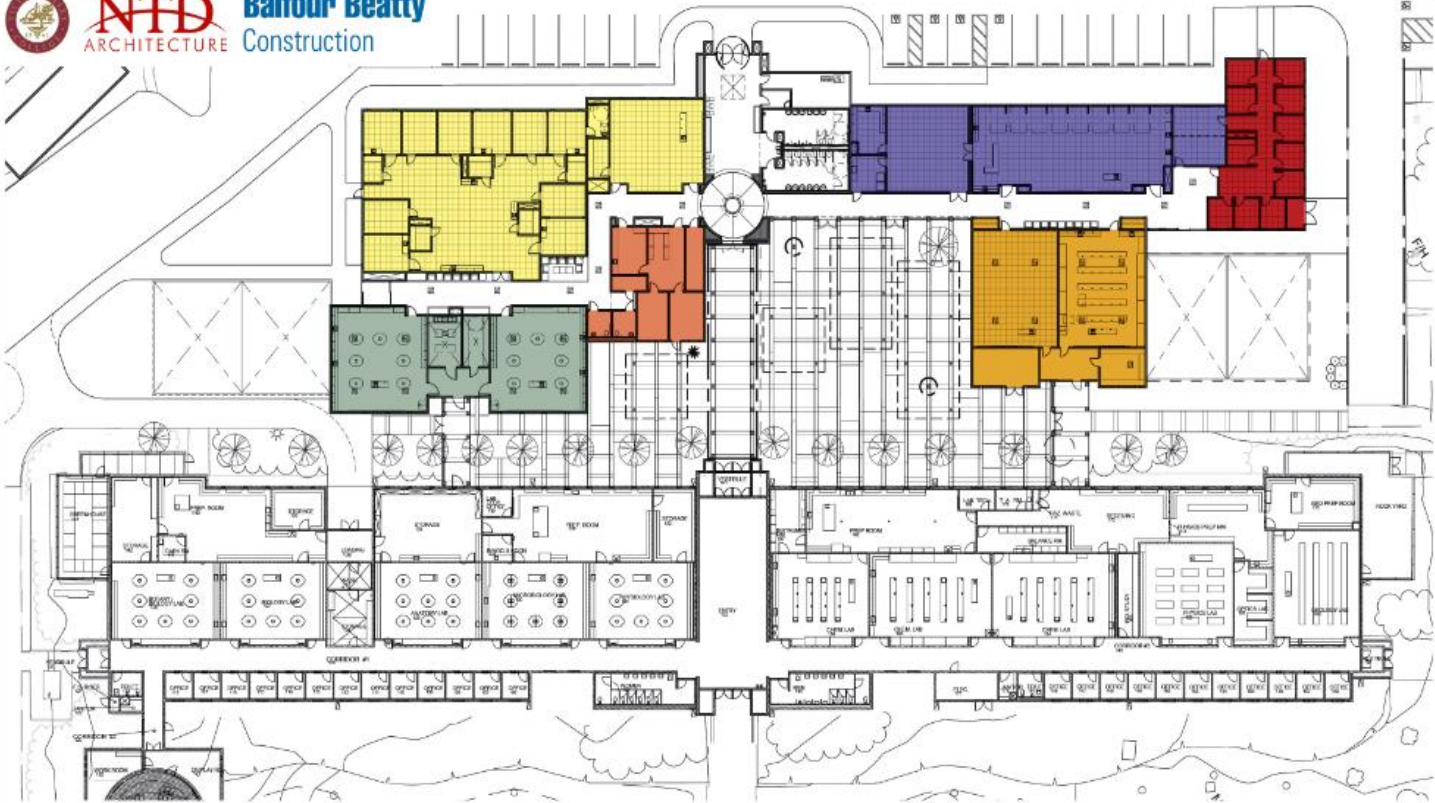


# VICTOR VALLEY COMMUNITY COLLEGE DISTRICT MEASURE JJ BOND PROGRAM FACILITIES REPORT









**NTD**  
ARCHITECTURE

**Balfour Beatty**  
Construction



## BUILDING DEPARTMENTS

- |   |  |
|---|--|
|  Nursing Simulation Labs / Digital Nursing Lab |  Anatomy Labs                |
|  Nursing Fundamentals Lab / Medical Equipment  |  Faculty Suite               |
|  Chemistry Lab / Digital Physical Science Labs |  Dean's Administration Suite |







VICTOR VALLEY COMMUNITY COLLEGE DISTRICT  
MEASURE JJ BOND PROGRAM  
FACILITIES REPORT

## Vocational Complex Expansion / Renovation

- Consultant has been hired to work with the Facilities department, faculty & staff
- Programing and needs analysis of space and instructional uses have been identified through meetings with the faculty and staff using the 2010 room use analysis report
- It was determined that a new Diesel Repair Shop would be constructed along with an addition to Welding and some improvements to the Agriculture and Natural Resources department
- Site visits have been taken to newly constructed Automotive facilities at other colleges to gain greater perspective of both good and bad applications of equipment and automotive lab layouts
- Scoping documents are currently being prepared for bidding



VICTOR VALLEY COMMUNITY COLLEGE DISTRICT  
MEASURE JJ BOND PROGRAM  
FACILITIES REPORT

## Solar Covered Parking

- Analysis has been completed on the feasibility of the solar covered parking
- Compass Energy Solutions was awarded the construction contract on October 9, 2012
- Drawings and construction documents were approved by the Division of the State Architects office
- Construction began in August of 2013, and is now substantially complete
- Completed tie-in to the Southern California Edison grid is expected by the end of this year



VICTOR VALLEY COMMUNITY COLLEGE DISTRICT  
MEASURE JJ BOND PROGRAM  
FACILITIES REPORT





# VICTOR VALLEY COMMUNITY COLLEGE DISTRICT MEASURE JJ BOND PROGRAM FACILITIES REPORT







## Mesure JJ Bond Program Reconciled Budget Summary Report

As of 03/31/2013

INCOME			SERIES 1 REVENUES	EXPENDED TO-DATE	% EXPENDE
Offering 1	Bond Series 1A	May 7, 2009	\$ 54,004,963		
	Bond Series B (BABS)	May 7, 2009	\$ 12,000,000		
	Bond Series 1C	June 23, 2009	\$ 70,017,065		
	Bond Interest (Projected)		\$ 750,000		
	<b>Subtotal</b>		<b>\$ 136,772,028</b>	<b>\$106,409,103</b>	<b>77.80%</b>

BUDGET/EXPENSE			SERIES 1 BUDGET	EXPENDED TO-DATE	% EXPENDE
			7/30/2012		
Available Program Contingency			\$ 218,957	\$ -	0.00%
<b>Bond Related Costs</b>					
<b>Total Bond Related Costs</b>			<b>\$ 54,702,857</b>	<b>\$ 54,702,857</b>	<b>100.00%</b>
<b>Victor Valley College Regional Public Safety Training Center</b>					
<b>Total RPSTC</b>			<b>\$ 31,836,050</b>	<b>\$ 31,268,190</b>	<b>98.22%</b>
<b>Victor Valley College Workforce Development Center - Phase 1</b>					
<b>Total Workforce Development Center</b>			<b>\$ 11,324,985</b>	<b>\$ 11,324,985</b>	<b>100.00%</b>
<b>Main Campus</b>					
<b>Music Building Code Compliance &amp; Renovation</b>			<b>\$ 3,800,000</b>		<b>13.90%</b>
- Architectural				\$ 98,223	
- Fiber Survey and relocation				\$ 111,193	
- Abatement				\$ 307,135	
- Construction					
- DSA Plan Check Fees					
- Soils Engineering				\$ 8,790	
- Other				\$ 3,230	
<b>Health Science Building Expansion</b>			<b>\$ 14,400,000</b>	\$ -	<b>0.01%</b>
Design/Build Team					
- Soils /Engineering				\$ 11,400	
- DSA Plan Check Fees					
- Other				\$ 7,620	
<b>Vocational Complex Expansion/Renovation</b>			<b>\$ 6,500,000</b>	\$ -	<b>0.01%</b>
- Architectural					
- Soils/ Engineering				\$ 11,400	
- Construction					
- DSA Plan Check Fees					
- Other				\$ 4,000	
<b>Solar Covered Parking</b>			<b>\$ 3,140,615</b>	<b>\$ 447,903</b>	<b>14.26%</b>
<b>Campus Wide Key Card Access</b>			<b>\$ 1,000,000</b>	\$ -	<b>0.00%</b>
<b>Campus wide Surveillance system</b>			<b>\$ 245,000</b>	\$ -	<b>0.00%</b>
<b>Program Soils Testing &amp; Engineering</b>			<b>\$ 39,000</b>	<b>\$ 31,440</b>	<b>80.62%</b>
<b>Program Consultants</b>			<b>\$ 175,000</b>	<b>\$ 64,300</b>	<b>36.74%</b>
<b>Program Manager</b>			<b>\$ 500,000</b>	\$ -	<b>0.00%</b>
<b>Energy Projects</b>			<b>\$ 1,868,547</b>	<b>\$ 1,765,912</b>	<b>94.51%</b>
<b>Main Campus Solar CPV (Bond only)</b>			<b>\$ 2,557,322</b>	<b>\$ 2,557,322</b>	<b>100.00%</b>
<b>Campus Roadway &amp; Parking Lot Improvements</b>			<b>\$ 2,833,125</b>	<b>\$ 2,833,125</b>	<b>100.00%</b>
<b>Gymnasium HVAC Upgrades</b>			<b>\$ 630,570</b>	<b>\$ 630,570</b>	<b>100.00%</b>
<b>Campus I.T. Upgrades</b>			<b>\$ 1,000,000</b>	<b>\$ 219,508</b>	<b>21.95%</b>
<b>BOND JJ FUND TOTALS</b>			<b>\$ 136,772,028</b>	<b>\$ 106,409,103</b>	<b>77.80%</b>



**District Projects Priority Order**

Victor Valley CCD



VICTOR VALLEY COMMUNITY COLLEGE DISTRICT  
MEASURE JJ BOND PROGRAM  
FACILITIES REPORT

No.	Project	Occupancy		Source	Schedule of Funds					
		ASF	Total Cost		2013/2014	2014/2015	2015/2016	2016/2017	2017/2018	2018/2019
1	Music Building Modernization				Victor Valley Community College					
0	2014/2015				(C)(E)					
	\$3,800,000	NonState		\$3,460,000						
2	Science/Health Building				Victor Valley Community College					
14,880	2015/2016				(P)(W) (C) (E)					
	\$14,400,000	NonState		\$1,150,000	\$12,427,000	\$823,000				
3	Expand/Refurbish Certain Vocational B				Victor Valley Community College					
6,732	2014/2015				(P)(W) (C)(E)					
	\$6,500,000	NonState			\$435,000	\$6,065,000				
4	Student Services One-Stop Center				Victor Valley Community College					
4,442	2015/2016				(P)(W) (C)(E)					
	\$6,569,000	NonState				\$501,000	\$6,068,000			
5	Structurally Repair Administration Buildi				Victor Valley Community College					
	2017/2018				(P)(W) (C)(E)					
	\$2,989,000	State				\$179,000	\$2,810,000			
6	Visual/ Performing Arts Lab Building				Victor Valley Community College					
38,470	2019/2020				(P)(W) (C) (E)					
	\$25,826,000	State				\$1,345,000	\$22,882,000	\$1,599,000		
7	Old Art and Music Modernization				Victor Valley Community College					
	2019/2020				(C)(E)(P)(W)					
	\$11,258,900	State						\$11,258,900		
8	Old Nursing Bldg #32 Modernization				Victor Valley Community College					
841	2020/2021				(P)(W) (C)(E)					
	\$4,707,000	State						\$463,000	\$4,244,000	
9	Liberal Arts Modernization				Victor Valley Community College					
	2020/2021				(P)(W) (C)(E)					
	\$8,988,000	State						\$874,000	\$8,114,000	
10	Academic Commons Building Renovati				Victor Valley Community College					
	2020/2021				(P)(W) (C)(E)					
	\$1,743,000	NonState						\$137,000	\$1,606,000	
11	Practice Fields/Track				Victor Valley Community College					
7,620	2020/2021				(P)(W) (C)(E)					
	\$4,725,000	State						\$380,000	\$4,345,000	
	\$4,725,000	NonState						\$380,000	\$4,345,000	
12	Westside Center - Phase I				Victor Valley Community College					
27,500	2022/2023				(P)(W)					
	\$49,430,000	NonState							\$2,237,000	
13	Westside Center - Phase II				Victor Valley Community College					
19,000	2024/2025				(P)					
	\$13,920,000	State							\$504,000	
14	Campus-wide Parking & Traffic Improv				Victor Valley Community College					
	2019/2020				(C)(P)(W)					
	\$3,500,600	NonState							\$3,500,600	