

CAMPUS CORE COMMUNITY A:

Academics/ Administration/Advanced Technology

are located in Upper Campus and is in the **Riparian Woodlands** landscape zone and part of the **CORE CAMPUS ZONE**. This core campus community is comprised of seven existing buildings - Liberal Arts (building 30), Science (31), the Planetarium, Library (41), Academic Commons (42) buildings, the Counseling & Administration (55) and the Advanced Technology building currently under construction. It will also have six new buildings - Science2, Humanities/Social Sciences 1&2, Liberal Arts, Business and a new two story Administration building which will facilitate Administration and Finance. Building 55 will be modernized to facilitate Executive offices, conference rooms and gallery. The Counseling department will occupy the new "One Stop Shop" building. The Liberal Arts and Humanities/Social Sciences 1&2 are two story buildings. Science 2 and Business buildings are one story buildings. The existing Liberal Arts building (30) will be modernized to facilitate the Math Department. This creates an adjacency with the Science department and together shares a courtyard. Humanities/Social Sciences 1 & 2, Liberal Arts, Science2 and Business buildings are located along "Rams Walk" which is a long, formal, tree lined pedestrian walkway. The buildings are then organized to create their own courtyard called "Academic Plaza". Power, heating and cooling to these buildings are supplied by the newly expanded central plant (40).

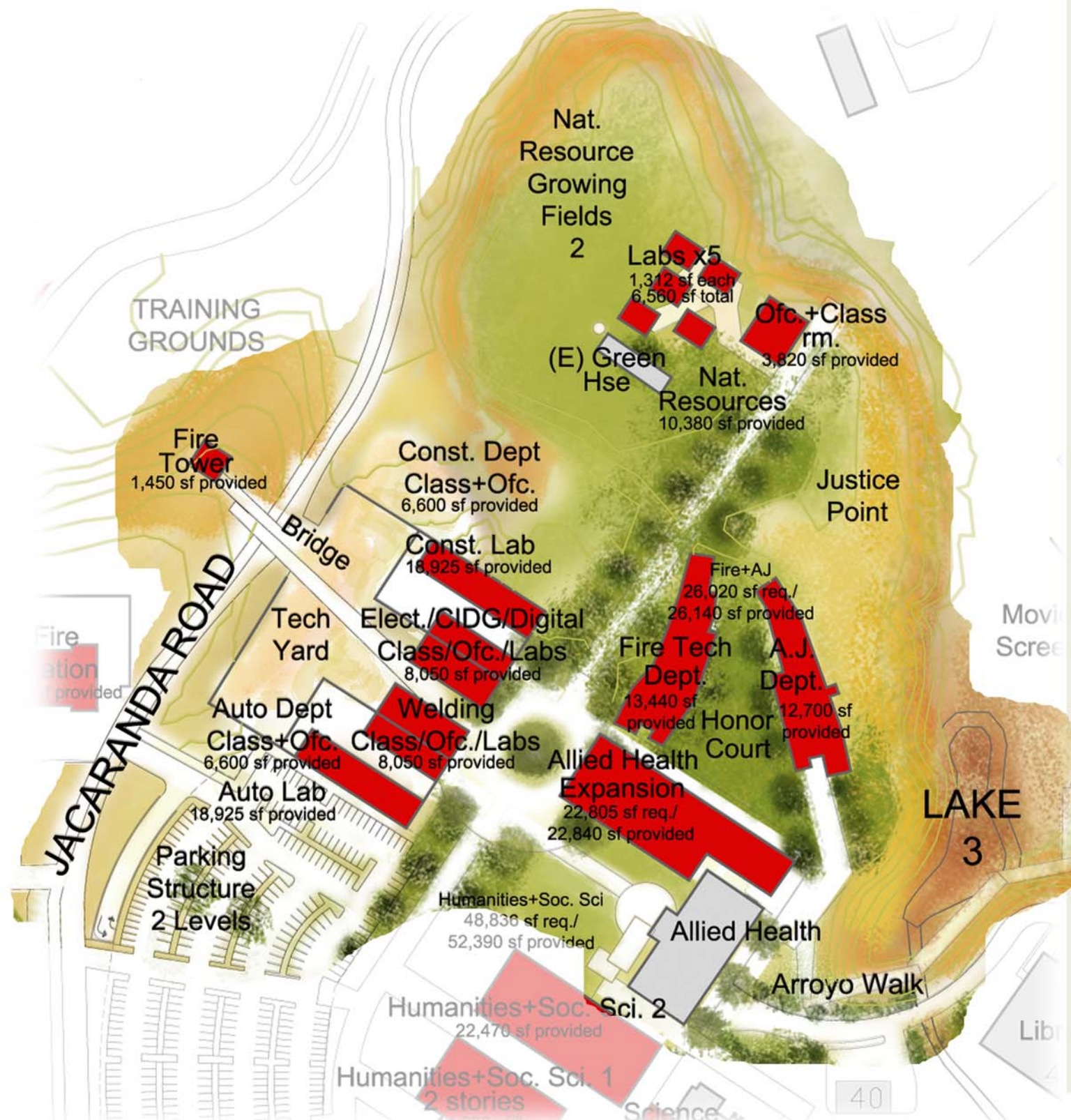


Victor Valley College

VI·SION

vi·sion (P) Pronunciation Key (vzhn)
n.

The faculty of sight; eyesight; good vision.
Something that is or has been seen.
Unusual competence in discernment or perception; intelligent foresight; a leader of vision.
The manner in which one sees or conceives of something.
A mental image produced by the imagination.



CAMPUS COMMUNITY B: Technology Education (Tech ED) is located in the new "Middle Campus" and is in the **Riparian Woodlands** and **Desert Grasslands** landscape zones. It is in the **Tech ED ZONE**. Allied Health1 (32) is the only existing building. There are 14 new buildings – Allied Health2, Administration & Justice (AJ), Fire Technology, Automotive, Welding, Electronics/CIDG, Construction, Environmental/Sustainability Technology (seven buildings). Automotive, Welding and Construction are two story buildings with classrooms and offices over two large shops and a common yard called "Tech Yard". Electronics/CIDG is a one story building that is located above the Construction shop. This organization provides a quiet environment for classrooms and offices. Automotive, Welding, Electronics/CIDG and Construction create a micro community for manufacturing studies. Allied Health2, AJ, and Fire Technology buildings are one story and create a micro community for public services. The three buildings are organized to create triangular shaped formal courtyard called "Honor Court" where daily inspections and ceremonies would occur.

The AJ building over looks "Justice Point" an exercise field for cadets and has an uninterrupted view of Lower Campus and the desert horizon beyond.

The Fire Technology department shares a training facility and tower with the new Fire Station at the Training Grounds. The students and faculty of Fire Technology access the Training Grounds by a walkway and bridge that passes through and over the Manufacturing Studies micro community. This allows an opportunity for passers by to observe the daily activities of another department. The Training Grounds is also shared with students and faculty of AJ and the Allied Health department.

The Environmental/Sustainability Technology department has one main building that facilitates offices and classrooms along with five free standing labs and a greenhouse. This department is situated in the Ecological Restoration and Research site. It also has an uninterrupted view of Lower Campus and the desert horizon beyond.

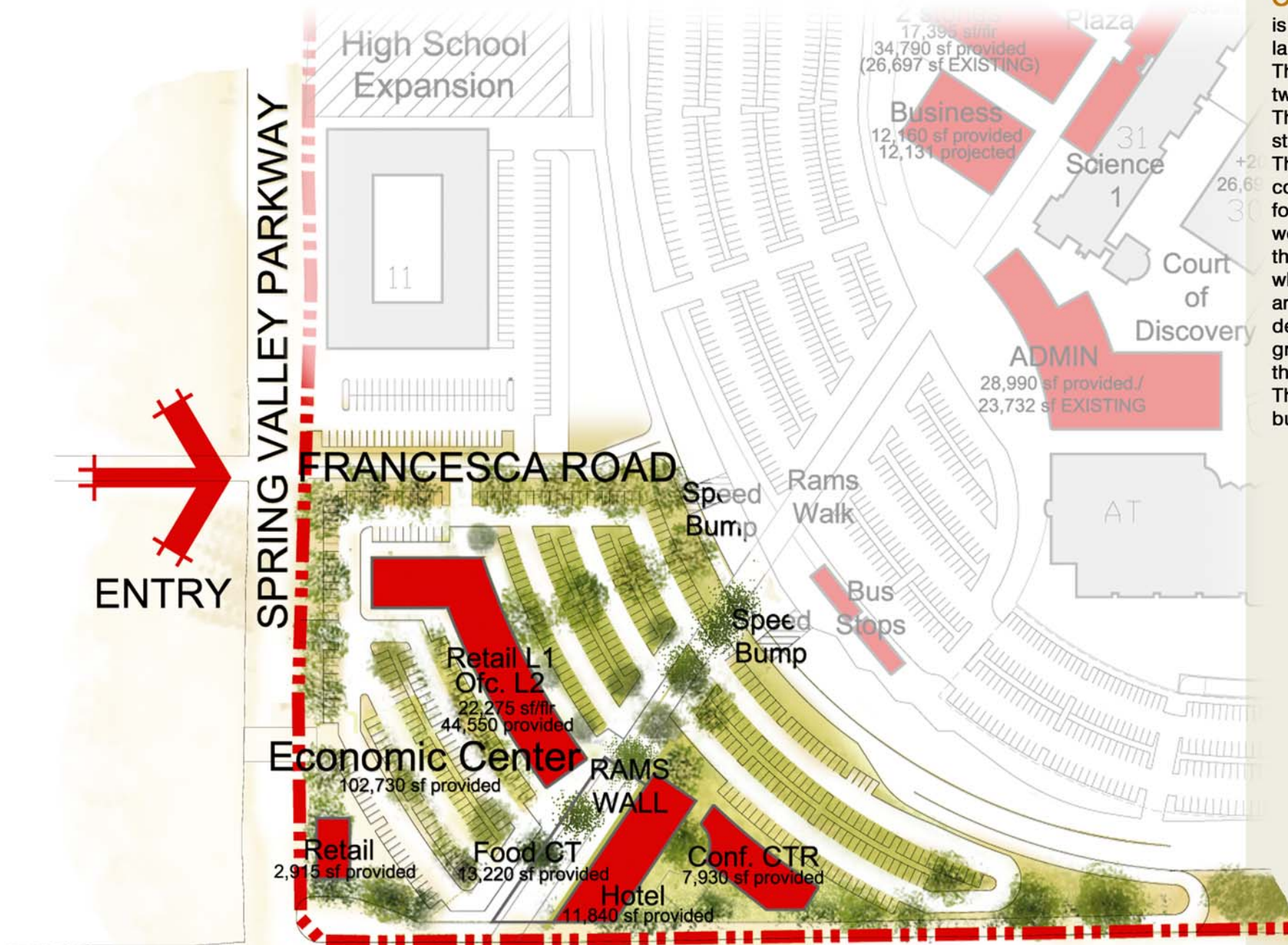


Victor Valley College



vi-sion (P) Pronunciation Key (vzhn)
n.

The faculty of sight; eyesight; good vision.
 Something that is or has been seen.
 Unusual competence in discernment or perception; intelligent foresight; a leader of vision.
 The manner in which one sees or conceives of something.
 A mental image produced by the imagination.



CAMPUS COMMUNITY D: Economic Center

is located in Upper Campus and is in the Joshua Tree Woodlands and Desert Grasslands landscape zones and is a micro community in the **CAMPUS OUTREACH ZONE**. This community is a Public/Private partnership with the local community to build a one and two story, mixed use facility of retail/fast food, offices, hotel and conference facility. The concept of this community is that space would be provided as an incubator for small start up businesses to grow. The space would be occupied on a short term lease. The tenants would have access to College courses and amenities such as the print shop, conference room and catering services. There will be a small hotel, conference facility and food court and advanced students from the Hotel Management and Culinary Arts program would have the opportunity for internship. The Economic Center Community is located on the corner of Bear Valley Road and Spring Valley Parkway, a prime, high visibility site which makes this community an important identity marker for the College. To highlight the arrival to the campus, the Economic Center Community should have a unique architectural design. The master plan illustration shows the "Rams Wall" which is a long, multi-story graphic wall that has the VVC Rams logo and an electronic messaging board announcing the College's activities. The utilities for heating, cooling will need to be self contained units attached to each building.

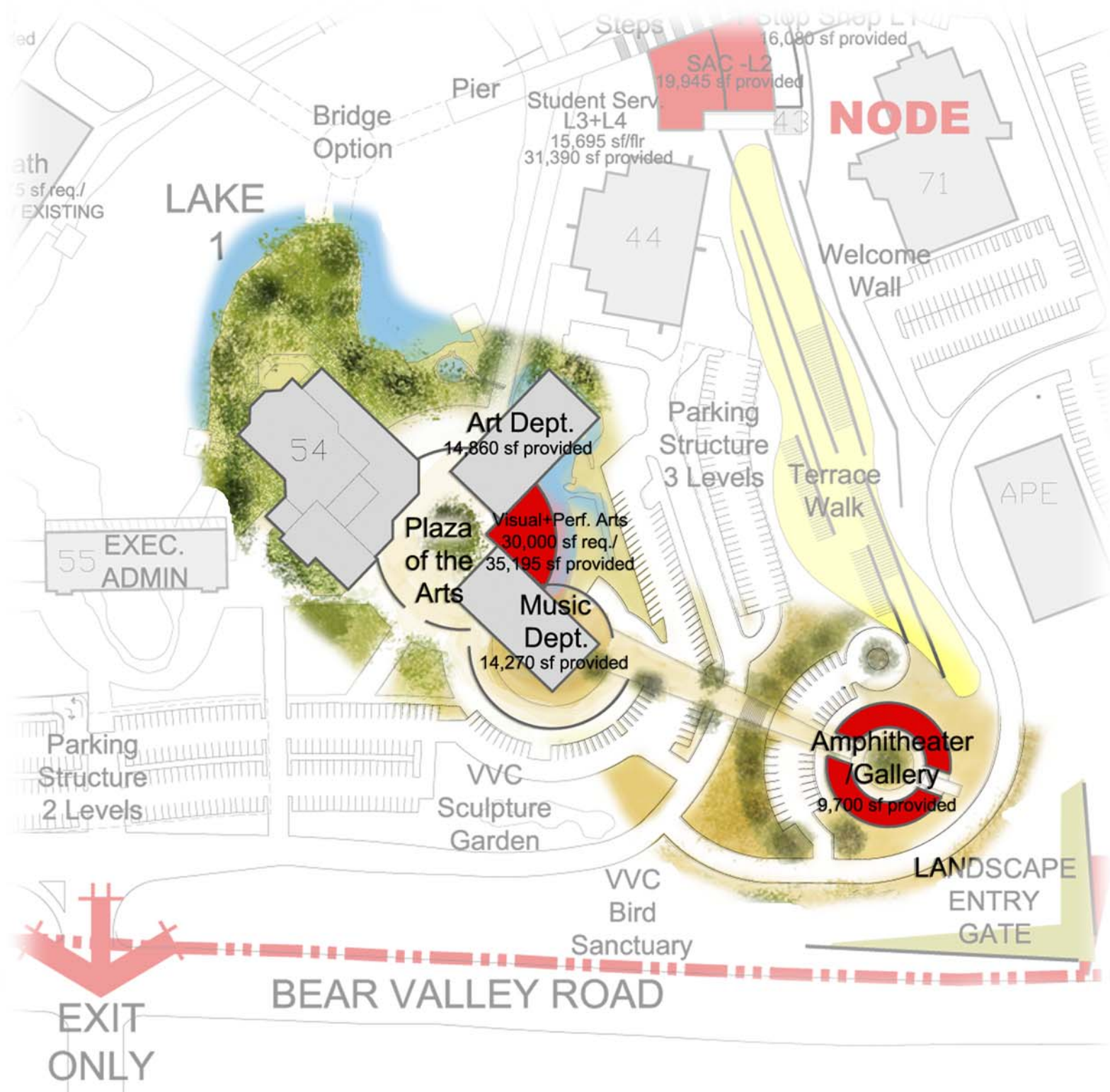


Victor Valley College



vi·sion (P) Pronunciation Key (vzhn)
n.

The faculty of sight; eyesight; good vision.
Something that is or has been seen.
Unusual competence in discernment or perception; intelligent foresight; a leader of vision.
The manner in which one sees or conceives of something.
A mental image produced by the imagination.



CAMPUS CORE COMMUNITY E: Cultural Center

located in Upper Campus and is in the **Riparian Woodlands, Joshua Tree Woodlands and Desert Grasslands** landscape zones. It is a micro-community in the **CAMPUS CORE ZONE**. This Campus Core Community has three existing buildings – Performing Arts Center (54), former Student Services I&II (50 & 52), now Music and Art departments. There are two new buildings, a large music performance hall/common space that connects the Music and Arts buildings. There is also a new Amphitheater/Gallery building that is circular with a large central open air amphitheater. The building would house artwork and sculptural installations. Some permanent sculptures will be in the amphitheater. The building’s circular shape assists with the acoustics of the amphitheater. The building shields the amphitheater from the winds and its high walls deflect roadway noise. This building is located on a site that is elevated from the corner of Bear Valley Road and Fish Hatchery Road, the main entrance to the campus. This building is an important identity marker for the College. To highlight the arrival to the campus, the Amphitheater/Gallery building should have a unique architectural design making it prominently visible during the day. At night it should be illuminated in a way that makes it a bright, welcoming “lantern” to passers by. The utilities for heating, cooling will need to be self contained units attached to each building.

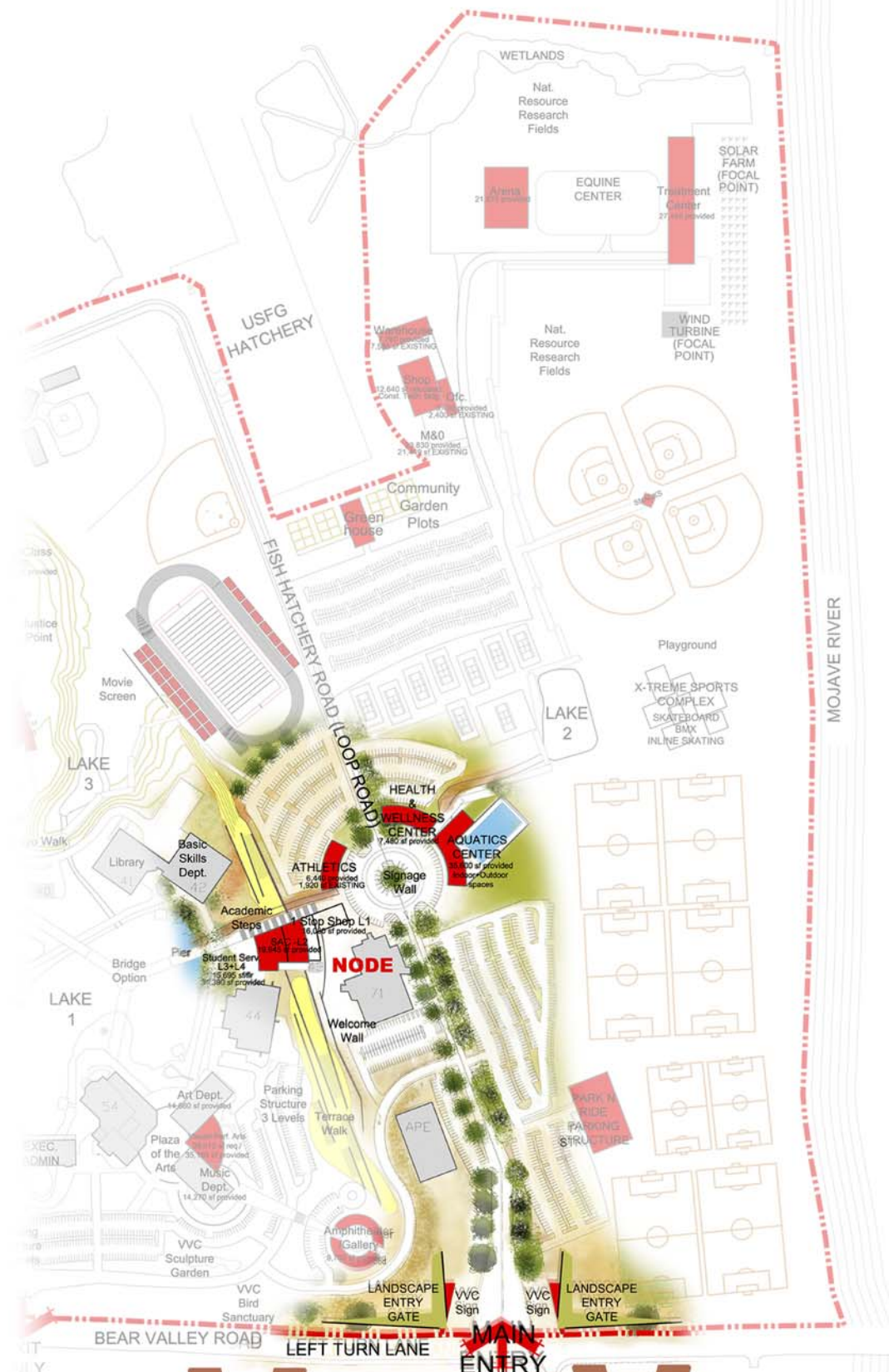


Victor Valley College



vi-sion (P) Pronunciation Key (vzhn)
n.

The faculty of sight; eyesight; good vision.
 Something that is or has been seen.
 Unusual competence in discernment or perception; intelligent foresight; a leader of vision.
 The manner in which one sees or conceives of something.
 A mental image produced by the imagination.



CAMPUS COMMUNITY F:

One Stop Shop / Student Services / Student Activities / Athletics

is the **NODE** of activity and the **MAIN ENTRY ZONE** for the campus. It will have the campus's main identity building, a four story terracing building located next to the existing Elevator Tower (43) and is in the **Riparian Woodlands, Desert Grasslands** and **Arroyo Desert Wash** landscape zones. The building terraces "The Slope" making a physical connection between Upper and Lower Campus. The roof of each level is an observation deck and garden with landscaping that represents the four microclimate zones that organize the campus. As each roof deck climbs up "The Slope" visitors have views of Lower Campus, the Mojave River, the desert horizon, the mountains beyond and Upper Campus. Way finding to the One Stop Shop is marked by a large traffic round about and landscaped signage. Entering the One Stop Shop the visitor is warmly greeted and provided information about the College and its campus. The first time student can register for classes, make fee payments and get counseling in this facility. From the One Stop Shop, the visitor can go to the Student Activity Center on the second level. On this level there is the bookstore, food court, student lounge and study areas. On the third and fourth levels are the Student Services facility where students can get special counseling, take an assessment exam, take advantage of the Extended Opportunity Programs and Services (EOPS)/Cooperative Agencies Resources for Education (C.A.R.E.) or receive special assistance from the Disabled Student Programs and Services (DSPS). The existing Elevator Tower (43) is modernized and incorporated into the One Stop Shop Student Activities Center making stops at each level of the building.

The exterior skin of the tower should be modernized so that it functions as a way finding mechanism and becomes part of the new campus landmark.

Athletics is the next campus community which has Collegiate Athletics and Community Athletics and is in a Public/Private partnership with the College. This area has one existing building – Gym (71) and another soon to begin construction - Adaptive Physical Education (APE). There will be three new buildings – Athletics, Health & Wellness Center and Aquatics Center. The Athletics building is dedicated to collegiate athletics with classrooms, labs and offices. This facility will provide an opportunity for the College to develop a sports medicine program and other new sports programs. The Health and Wellness Center is a facility, in partnership with the College, for the community to use as a place for exercise, social events and community education courses. This facility will also have programs such as a Boys and Girls Club. The Aquatic Center is another facility serving the community and is in partnership with the College. It has offices, classrooms, locker facilities and has a covered Olympic size pool. Since this facility is enclosed it can be used day and night and throughout the year. The Aquatic Center will provide the College an opportunity to develop a competitive collegiate swim, dive and water polo program.

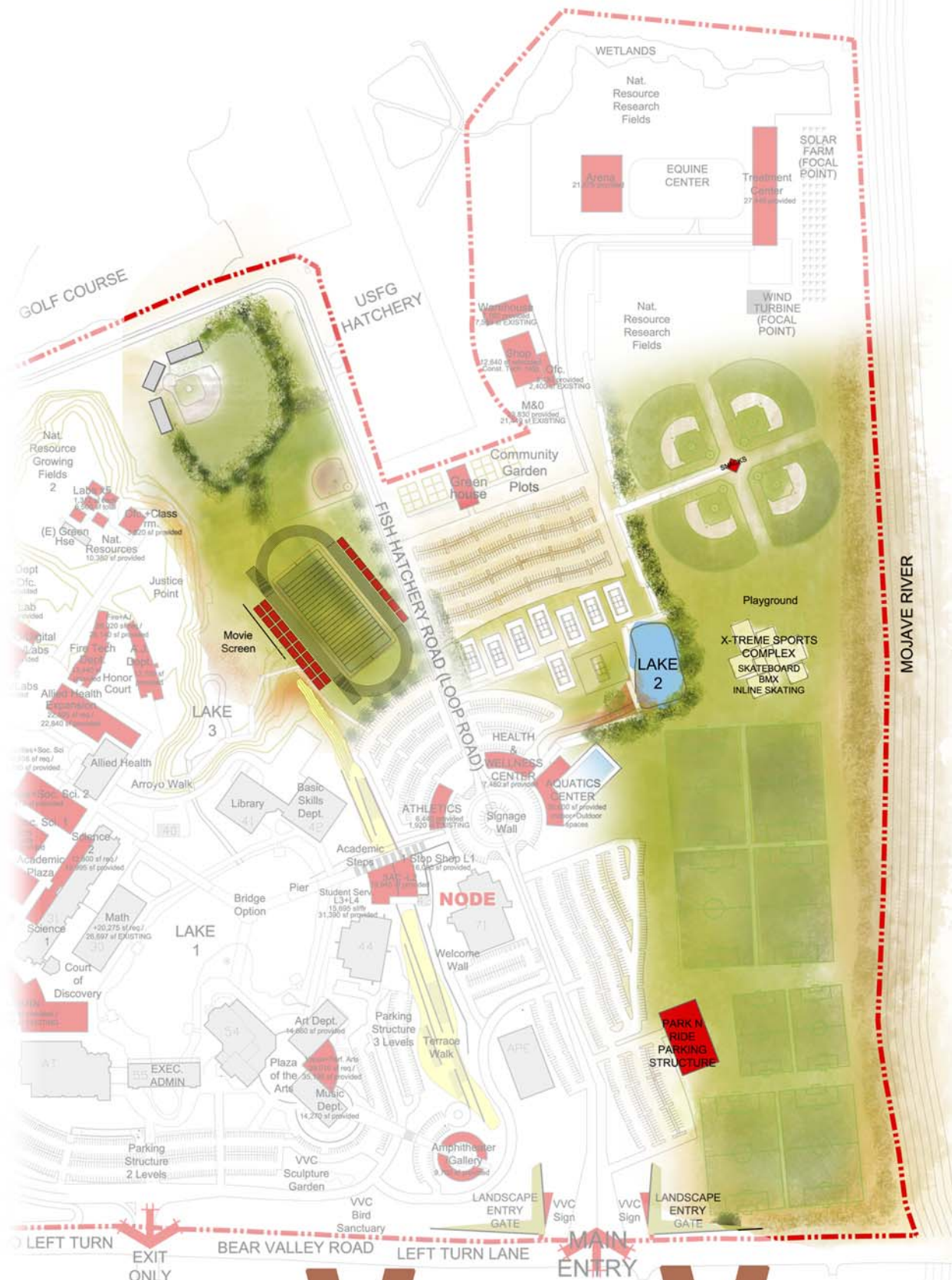


Victor Valley College



vi·sion (P) Pronunciation Key (vzhn)
n.

The faculty of sight; eyesight; good vision.
Something that is or has been seen.
Unusual competence in discernment or perception; intelligent foresight; a leader of vision.
The manner in which one sees or conceives of something.
A mental image produced by the imagination.



CAMPUS COMMUNITY G:
Collegiate Athletic / Community Athletic Fields

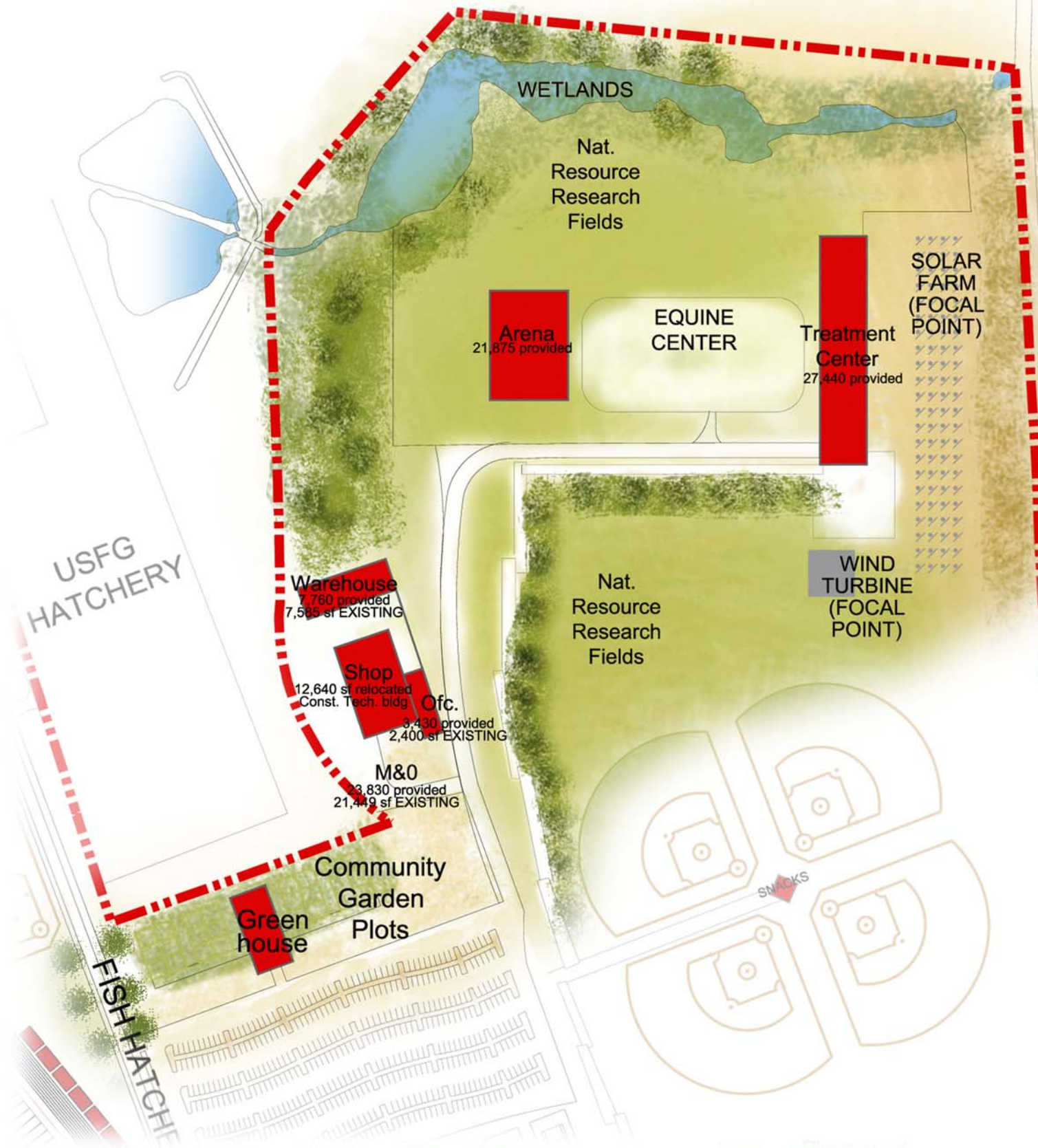
are located in Lower Campus and is in the **Desert Grasslands, Joshua Tree Woodlands** and **Arroyo Desert Wash** landscape zones. It is the **ATHLETICS ZONE** of the campus. The collegiate athletic fields will have a new 2,000 seat, lighted stadium with a football field and NCAA regulation size running track. The interior of the stadium will be protected from the winds by the stadium's architecture and with surrounding trees. Lighting will be focused on the playing field and light spillage controlled. The collegiate baseball and softball fields will remain at its present locations. These fields will be modernized. The Community Athletic fields will facilitate sports such as soccer, football and lacrosse with six regulation size fields and two junior size fields. There are eight tennis courts and one center court. There are four baseball fields and a central snack bar and restroom facility. Lake 2 is located in this area and is landscaped in the **Riparian Landscape** and **Arroyo Desert Wash** landscape zones. The area surrounding Lake 2 will have seating along a meandering walkway. From the lake one can see the playground, skate park and playing fields.



Victor Valley College



The faculty of sight; eyesight; good vision.
 Something that is or has been seen.
 Unusual competence in discernment or perception; intelligent foresight; a leader of vision.
 The manner in which one sees or conceives of something.
 A mental image produced by the imagination.



CAMPUS COMMUNITY H: Veterinary Technology (Vet TECH)

is located in Lower Campus and is in the **Desert Grasslands** and **Joshua Tree Woodlands** landscape zones. This campus community is in the **Vet TECH CAMPUS ZONE**, which has the Sustainability Research Site and the sensitive Wetlands. These sites have been extensively researched and documented by the Environmental/Sustainability Technology department. New to the research site is a 5 megawatt wind turbine tower— a partnership with Chevron and the College and a solar energy research field. Vet TECH is a new program designed to treat, teach and research the health and reproduction of horses and other large animals. The state of the art building will facilitate large exam rooms, stalls, classrooms, labs, offices and feed storage. Across from the Vet TECH building is an indoor arena which will facilitate indoor riding activities, exhibits and animal viewing and a petting area. Between the two buildings is an outdoor exercise/riding track. Vet TECH will facilitate a small number of horses and other large animals. Another amenity in this zone is the Community Garden and green house. This dedicated area is designed for community participation to grow vegetables and plants for consumption or to sell in a farmer's market setting. The utilities for heating, cooling for Vet TECH will need to be self contained units attached to each building.



Victor Valley College



vi·sion (P) Pronunciation Key (vzhn)
n.

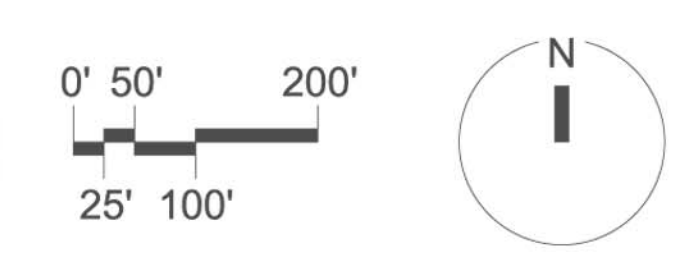
The faculty of sight; eyesight; good vision.
 Something that is or has been seen.
 Unusual competence in discernment or perception; intelligent foresight; a leader of vision.
 The manner in which one sees or conceives of something.
 A mental image produced by the imagination.



CAMPUS ZONE LEGEND:

- CAMPUS OUTREACH ZONE
- TECHNICAL EDUCATION (TechED) ZONE
- CORE CAMPUS ZONE
- ATHLETICS ZONE
- MAIN ENTRY ZONE
- VETERINARY TECHNOLOGY (VetTECH) ZONE

SITE PLAN Option 04



VICTOR VALLEY College **vi·sion**

vi·sion (P) Pronunciation Key (vzhn)
 n.
 The faculty of sight; eyesight; good vision.
 Something that is or has been seen.
 Unusual competence in discernment or perception; intelligent foresight; a leader of vision.
 The manner in which one sees or conceives of something.
 A mental image produced by the imagination.