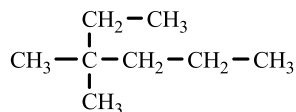


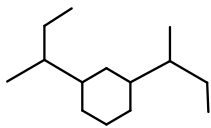
1. The functional group contained in the compound $\text{CH}_2=\text{CH}_2$ is a(n)
 A. ester B. ketone C. alkene D. alcohol
2. An alkane with 7 carbon atoms contains _____ hydrogen atoms.
 A. 16 B. 14 C. 20 D. 18



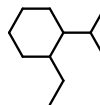
3. The IUPAC name of _____ is
 A. 2-ethyl-2-methylpentane B. 2-methyl-3-ethylpentane
 C. 2-ethyl-3-methylhexane D. 3,3-dimethylhexane

4. The formula of 1,2-diisopropylcyclohexane is

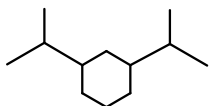
A.



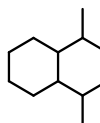
B.



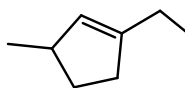
C.



D.



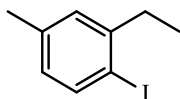
5. The reaction of propane with bromine is called?
 A. halogenation B. addition C. elimination D. combustion
6. The molecular formula of _____ fit the general formula ($\text{C}_n\text{H}_{2n-2}$).
 A. alkynes B. alcohols C. alkenes D. alkanes



7. The name of _____ is
 A. 1-ethyl-4-methylcyclopentene B. 1-ethyl-3-methylcyclopentene
 C. 1-ethyl-3-methyl-1-cyclopentene D. 1-ethyl-3-methyl-2-cyclopentene

8. For which of the following is *cis-trans* isomerism possible?
 A. 1,2-dibromoethyne B. 1,1-dibromoethane C. 1,1-dibromoethene D. 1,2-dibromoethene

9. The product of the reaction ($\text{CH}_3-\text{CH}=\text{CH}-\text{CH}_2-\text{CH}_2-\text{CH}_3 + \text{Br}_2$) is
 A. $\text{CH}_3-\text{CHBr}-\text{CHBr}-\text{CH}_2-\text{CH}_2-\text{CH}_3$ B. $\text{CH}_3-\text{CHBr}_2-\text{CHBr}_2-\text{CH}_2-\text{CH}_2-\text{CH}_3$
 C. $\text{CH}_2=\text{CHBr}-\text{CHBr}-\text{CH}_2-\text{CH}_2-\text{CH}_3$ D. $\text{CH}_3-\text{CHBr}=\text{CHBr}-\text{CH}_2-\text{CH}_2-\text{CH}_3$



10. The name of the compound _____ is
 A. 3-ethyl-4-iodo-1-methylbenzene B. 1-ethyl-2-iodo-5-methylbenzene
 C. 2-ethyl-1-iodo-4-methylbenzene D. 6-ethyl-1-iodo-4-methylbenzene

Answers

1	2	3	4	5	6	7	8	9	10
C	A	D	D	A	A	B	D	A	C